

INDUSTRIAL SHOCK ABSORBERS POWERSTOP

THREAD M27X3.0

SERIES

PowerStop®



- | | | | |
|--|---------------------|----------------------------------|------------------------|
| ▶ Standard Energy pressure max. (abs.) | 1 [bar] | ▶ Locknut tightening torque max. | 60 [Nm] |
| ▶ High Energy pressure max. (abs.) | 10 [bar] | ▶ Force in end position max. | 17 [kN] |
| ▶ Adjustable Energy pressure max. (abs.) | 10 [bar] | ▶ Material | Stainless steel |
| ▶ Angle of Impact max. | 2 [°] | ▶ Material fixed stop | Aluminum nickel plated |
| ▶ Max. piston return time | N: 0.4 / L: 0.6 [s] | ▶ PWIS-free | Yes |
| ▶ Permitted temperature range | -10 ... +70 [°C] | ▶ RoHS compliant | Yes |
| ▶ Organic oil (biodegradable) | H1-certified | ▶ REACH compliant | Yes |

TECHNICAL DATA

	Design	Series	Thread	Stroke variant	Stroke [mm]	Hardness degree	Impact velocity			Energy absorption max.			Protection	Return force		Head	Version
							min. max.		per stroke	per stroke		per stroke		min.	max.		
							[m/s]			[J]	[J/h]						
STANDARD ENERGY	P	SE	27X30	N	25	H	0,1	1,2	105	120.000	105	D	11	26	D	-A	
						M	0,8	2,2	105	120.000	105	A	11	26	S		
						S	1,8	3,5	105	120.000	105	F	11	26	K		
						W	3	5	105	120.000	105						
HIGH ENERGY	P	HE	27X30	N	25	H	0,1	1,2	230	120.000	400	D	26	45	D	-A	
						M	0,8	2,2	210	120.000	330	A	26	45	S		
				L	40	S	1,8	3,5	190	120.000	260	F	26	45	K		
						W	3	5	170	120.000	190						
ADJUSTABLE ENERGY	P	AE	27X30	N	25	H	0,1	5	230	120.000	230	D	26	45	D	-A	
												A	26	45	S		
				L	40							F	26	45	K		

HOW TO ORDER CORRECTLY

P HE 27X30 L H A K -A



Product finder

- ▶ Calculate shock absorbers quicker
- ▶ Clearly arranged selection guide
- ▶ Smart solution – available on mobile devices

www.zimmer-group.de/en/pdti

Example order no.

PowerStop High Energy 27X30

- ▶ Stroke variant: long (L)
- ▶ Hardness degree: Hard (H)
- ▶ Protection: wiper (A)
- ▶ Head: plastic head (K)

PROTECTION

no protection	Felt ring	Wiper (NBR)
D -A	F -A	A -A
in a clean environment	against dust, chips, ...	against liquid, oil, ...

TECHNICAL DRAWINGS – STANDARD STROKE

N -A

	no head	with steel head	with plastic head
	D -A	S -A	K -A
STANDARD ENERGY			
HIGH ENERGY			
ADJUSTABLE ENERGY			

TECHNICAL DRAWINGS – LONG STROKE

L -A

	no head	with steel head	with plastic head
	D -A	S -A	K -A
HIGH ENERGY			
ADJUSTABLE ENERGY			



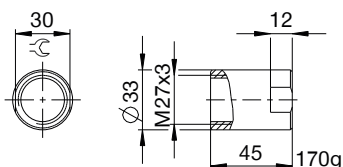
INDUSTRIAL SHOCK ABSORBERS POWERSTOP

THREAD M27X3.0

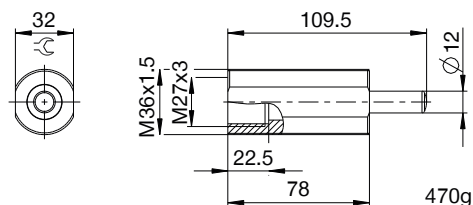
▶ ACCESSORIES

Pos.	Order no.	Accessories	Remarks
①	PAH27X30-A	Stop sleeve	Including 1x PVM27X30-A
②	PBV27X30NA-A	Side load adapter standard stroke Protection: wiper (NBR)	Impact angle max. 30°. Can only be used in combination with industrial shock absorbers without head. Locknut PVM36X15-A suitable for external thread of the side load adapter.
③	PBV27X30NF-A	Side load adapter standard stroke Protection: felt ring (felt)	Impact angle max. 30°. Can only be used in combination with industrial shock absorbers without head. Locknut PVM36X15-A suitable for external thread of the side load adapter.
④	PBV27X30LA-A	Side load adapter long stroke Protection: wiper (NBR)	Impact angle max. 30°. Can only be used in combination with industrial shock absorbers without head. Locknut PVM36X15-A suitable for external thread of the side load adapter.
⑤	PBV27X30LF-A	Side load adapter long stroke Protection: felt ring (felt)	Impact angle max. 30°. Can only be used in combination with industrial shock absorbers without head. Locknut PVM36X15-A suitable for external thread of the side load adapter.
⑥	PKS27X30-A	Clamping flange orthogonal screwed	On request.
⑦	PKP27X30-A	Clamping flange screwed in parallel	On request.
⑧	PVM27X30-A	Stainless steel locknut	Included with the industrial shock absorber.
⑨	PDD27X30-A	Pressure chamber seal	On request.

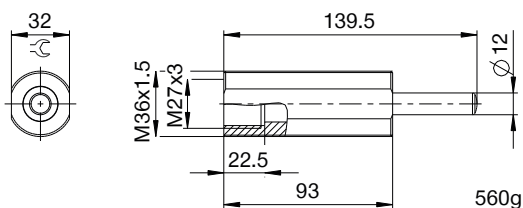
①



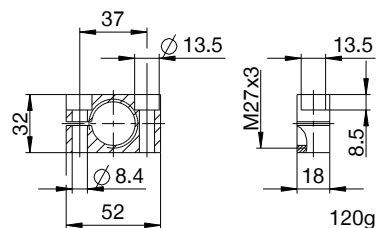
② ③



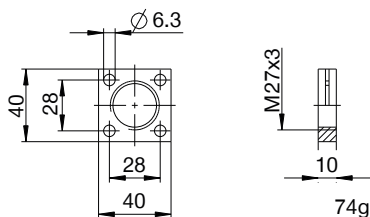
④ ⑤



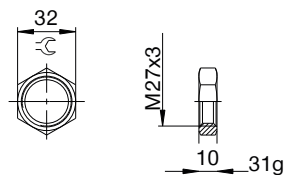
⑥



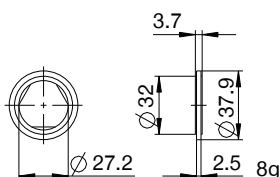
⑦



⑧



⑨



▶ CLASSIFICATION

P **HE** **27X30** **L** **H** **A** **K** **-A**

Design

P Industrial shock absorbers PowerStop

Series

ME Mini Energy

SE Standard Energy

HE High Energy

AE Adjustable Energy

Thread

27 Thread nominal diameter

X

30 Thread pitch (factor 10)

Stroke variant

N Standard stroke

L Long stroke

V Extra long stroke

Hardness degree

H Hard (0.1 - 1.2 m/s; Adjustable Energy: 0.1 - 5 m/s)

M Medium (0.8 - 2.2 m/s)

S Soft (1.8 - 3.5 m/s)

W Supersoft (3 - 5 m/s)

Protection

D no protection

F Felt ring

A Wiper (NBR)

B Bellow (TPE)

Head

D no head

S with steel head

K with plastic head

Version

-A Versioning from a to z