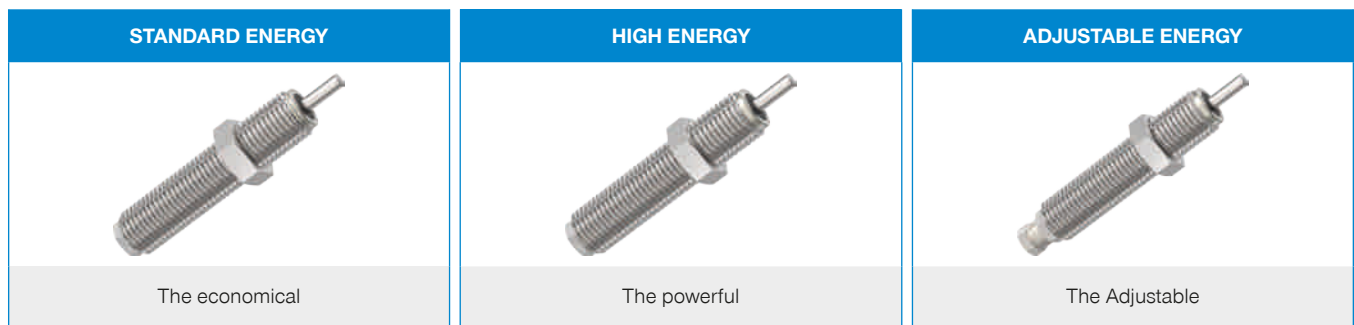


INDUSTRIAL SHOCK ABSORBERS POWERSTOP

THREAD M16X1.5

► SERIES

PowerStop



- | | | | |
|---|---------------------|---|------------------------|
| ► Standard Energy pressure max. (abs.) | 1 [bar] | ► Locknut tightening torque max. | 20 [Nm] |
| ► High Energy pressure max. (abs.) | 10 [bar] | ► Force in end position max. | 3.5 [kN] |
| ► Adjustable Energy pressure max. (abs.) | 10 [bar] | ► Material | Stainless steel |
| ► Angle of Impact max. | 2 [°] | ► Material fixed stop | Aluminum nickel plated |
| ► Max. piston return time | N: 0.2 / L: 0.4 [s] | ► PWIS-free | Yes |
| ► Permitted temperature range | -10 ... +70 [°C] | ► RoHS compliant | Yes |
| ► Organic oil (biodegradable) | H1-certified | ► REACH compliant | Yes |

► TECHNICAL DATA

| | Design | Series | Thread | Stroke variant | Stroke [mm] | Hardness degree | Impact velocity | | | Energy absorption max. | | | Protection | Return force | | Head | Version |
|-------------------|--------|--------|--------|----------------|----------------|-----------------|-----------------|------|----------------------|------------------------|--------------------------|------|------------|--------------|-----|------|---------|
| | | | | | | | Impact velocity | | Continuous operation | | Emergency stop operation | min. | | max. | | | |
| | | | | | | | min. | max. | per stroke | per hour | per stroke | | | | [N] | | |
| | | | | | [m/s] | [J] | [J/h] | [J] | | | | | | | | | |
| STANDARD ENERGY | P | SE | 16X15 | N | 12 | H | 0,1 | 1,2 | 20 | 50.000 | 20 | D | 3 | 6 | D | -A | |
| | | | | | | M | 0,8 | 2,2 | 20 | 50.000 | 20 | A | 3 | 6 | S | | |
| | | | | | | S | 1,8 | 3,5 | 20 | 50.000 | 20 | F | 3 | 6 | K | | |
| | | | | | | W | 3 | 5 | 20 | 50.000 | 20 | | | | | | |
| HIGH ENERGY | P | HE | 16X15 | N | 12 | H | 0,1 | 1,2 | 34 | 50.000 | 42 | D | 7 | 11 | D | -A | |
| | | | | | | M | 0,8 | 2,2 | 32 | 50.000 | 38 | A | 7 | 11 | S | | |
| | | | | L | 20 | S | 1,8 | 3,5 | 30 | 50.000 | 34 | F | 7 | 11 | K | | |
| | | | | | | W | 3 | 5 | 28 | 50.000 | 30 | | | | | | |
| ADJUSTABLE ENERGY | P | AE | 16X15 | N | 12 | H | 0,1 | 5 | 34 | 50.000 | 34 | D | 7 | 11 | D | -A | |
| | | | | | | | | | | | | A | 7 | 11 | S | | |
| | | | | L | 20 | | | | | | | F | 7 | 11 | K | | |

► HOW TO ORDER CORRECTLY

P HE 16X15 L H A K -A



Product finder

- Calculate shock absorbers quicker
- Clearly arranged selection guide
- Smart solution – available on mobile devices

www.zimmer-group.de/en/pdti

Example order no.

PowerStop High Energy 16X15

- Stroke variant: long (L)
- Hardness degree: Hard (H)
- Protection: wiper (A)
- Head: plastic head (K)

PROTECTION

| no protection | Felt ring | Wiper (NBR) |
|------------------------|--------------------------|--------------------------|
| D -A | F -A | A -A |
| | | |
| in a clean environment | against dust, chips, ... | against liquid, oil, ... |

TECHNICAL DRAWINGS – STANDARD STROKE

N -A

| | no head | with steel head | with plastic head |
|-------------------|---------|-----------------|-------------------|
| | D -A | S -A | K -A |
| STANDARD ENERGY | | | |
| HIGH ENERGY | | | |
| ADJUSTABLE ENERGY | | | |

TECHNICAL DRAWINGS – LONG STROKE

L -A

| | no head | with steel head | with plastic head |
|-------------------|---------|-----------------|-------------------|
| | D -A | S -A | K -A |
| HIGH ENERGY | | | |
| ADJUSTABLE ENERGY | | | |



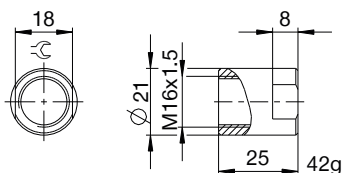
INDUSTRIAL SHOCK ABSORBERS POWERSTOP

THREAD M16X1.5

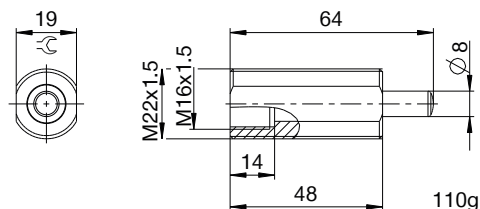
ACCESSORIES

| Pos. | Order no. | Accessories | Remarks |
|------|---------------------|---|--|
| ① | PAH16X15-A | Stop sleeve | Including 1x PVM16X15-A |
| ② | PBV16X15NA-A | Side load adapter standard stroke Protection: wiper (NBR) | Impact angle max. 30°. Can only be used in combination with industrial shock absorbers without head. Locknut PVM22X15-A suitable for external thread of the side load adapter. |
| ③ | PBV16X15NF-A | Side load adapter standard stroke Protection: felt ring (felt) | Impact angle max. 30°. Can only be used in combination with industrial shock absorbers without head. Locknut PVM22X15-A suitable for external thread of the side load adapter. |
| ④ | PBV16X15LA-A | Side load adapter long stroke Protection: wiper (NBR) | Impact angle max. 30°. Can only be used in combination with industrial shock absorbers without head. Locknut PVM22X15-A suitable for external thread of the side load adapter. |
| ⑤ | PBV16X15LF-A | Side load adapter long stroke Protection: felt ring (felt) | Impact angle max. 30°. Can only be used in combination with industrial shock absorbers without head. Locknut PVM22X15-A suitable for external thread of the side load adapter. |
| ⑥ | PKS16X15-A | Clamping flange orthogonal screwed | On request. |
| ⑦ | PKP16X15-A | Clamping flange screwed in parallel | On request. |
| ⑧ | PVM16X15-A | Stainless steel locknut | Included with the industrial shock absorber. |
| ⑨ | PDD16X15-A | Pressure chamber seal | On request. |

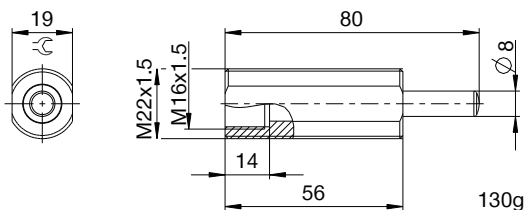
①



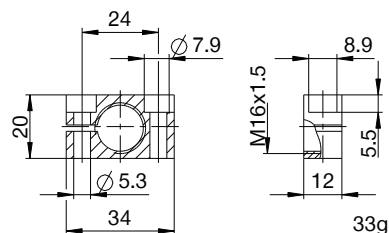
② ③



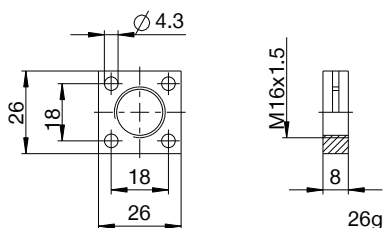
④ ⑤



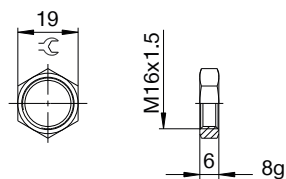
⑥



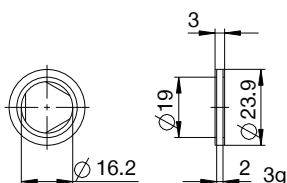
⑦



⑧



⑨



▶ CLASSIFICATION

P **HE** **16X15** **L** **H** **A** **K** **-A**

Design

P Industrial shock absorbers PowerStop

Series

ME Mini Energy

SE Standard Energy

HE High Energy

AE Adjustable Energy

Thread

16 Thread nominal diameter

X

15 Thread pitch (factor 10)

Stroke variant

N Standard stroke

L Long stroke

V Extra long stroke

Hardness degree

H Hard (0.1 - 1.2 m/s; Adjustable Energy: 0.1 - 5 m/s)

M Medium (0.8 - 2.2 m/s)

S Soft (1.8 - 3.5 m/s)

W Supersoft (3 - 5 m/s)

Protection

D no protection

F Felt ring

A Wiper (NBR)

B Bellow (TPE)

Head

D no head

S with steel head

K with plastic head

Version

-A Versioning from a to z