

# INDUSTRIAL SHOCK ABSORBERS POWERSTOP

## THREAD M08X1.0

### ► SERIES

PowerStop®



- |  |                  |                                  |                        |
|--|------------------|----------------------------------|------------------------|
| ► Standard Energy pressure max. (abs.)   | 1 [bar]          | ► Locknut tightening torque max. | 3 [Nm]                 |
| ► High Energy pressure max. (abs.)       | 10 [bar]         | ► Force in end position max.     | 1 [kN]                 |
| ► Adjustable Energy pressure max. (abs.) | 10 [bar]         | ► Material                       | Stainless steel        |
| ► Angle of Impact max.                   | 2 [°]            | ► Material fixed stop            | Aluminum nickel plated |
| ► Max. piston return time                | 0.15 [s]         | ► PWIS-free                      | Yes                    |
| ► Permitted temperature range            | -10 ... +70 [°C] | ► RoHS compliant                 | Yes                    |
| ► Organic oil (biodegradable)            | H1-certified     | ► REACH compliant                | Yes                    |

### ► TECHNICAL DATA

	Design	Series	Thread	Stroke variant	Stroke [mm]	Hardness degree	Impact velocity		Energy absorption max.			Protection	Return force		Head	Version	
							min.	max.	Continuous operation per stroke	Emergency stop operation per stroke	per hour		min.	max.			
																	[m/s]
STANDARD ENERGY	P	SE	08X10	N	6	H	0,1	1,2	1,5	10.000	1,5	D	1,5	3	D	-A	
							M	0,8	2,2	1,5	10.000	1,5	A	1,5	3		S
							S	1,8	3,5	1,5	10.000	1,5	F	1,5	3		K
							W	3	5	1,5	10.000	1,5	B	1,5	4,5		K
HIGH ENERGY	P	HE	08X10	N	6	H	0,1	1,2	4	10.000	5	D	2,5	4,5	D	-A	
							M	0,8	2,2	4	10.000	5	A	2,5	4,5		S
							S	1,8	3,5	3,5	10.000	4	F	2,5	4,5		K
							W	3	5	3,5	10.000	4	B	2,5	6		K
ADJUSTABLE ENERGY	P	AE	08X10	N	6	H	0,1	5	4	10.000	4	D	2,5	4,5	D	-A	
							A	2,5	4,5	S							
							F	2,5	4,5	K							
							B	2,5	6	K							

### ► HOW TO ORDER CORRECTLY

P SE 08X10 N W A K -A



#### Product finder

- Calculate shock absorbers quicker
- Clearly arranged selection guide
- Smart solution – available on mobile devices

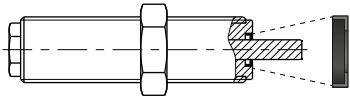
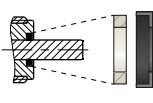
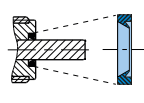
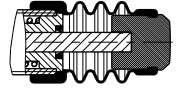
[www.zimmer-group.de/en/pdti](http://www.zimmer-group.de/en/pdti)

#### Example order no.

PowerStop Standard Energy 08X10

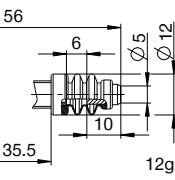
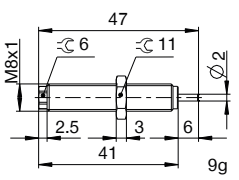
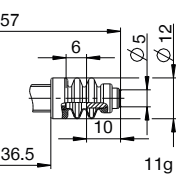
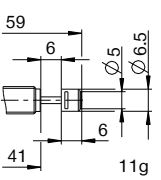
- Stroke variant: standard (N)
- Hardness degree: supersoft (W)
- Protection: wiper (A)
- Head: plastic head (K)

## PROTECTION

no protection	Felt ring	Wiper (NBR)	Bellow (TPE)
D -A	F -A	A -A	B -A
			
in a clean environment	against dust, chips, ...	against liquid, oil, ...	on request sealed

## TECHNICAL DRAWINGS – STANDARD STROKE

N         -A

	no head	with steel head	with plastic head	with bellow and steel head	with bellow and plastic head
	D -A	S -A	K -A	B S -A	B K -A
<b>STANDARD ENERGY</b>					
<b>HIGH ENERGY</b>					
<b>ADJUSTABLE ENERGY</b>					



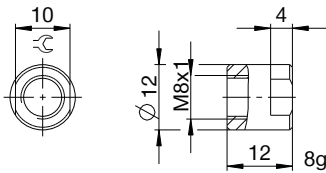
# INDUSTRIAL SHOCK ABSORBERS POWERSTOP

## THREAD M08X1.0

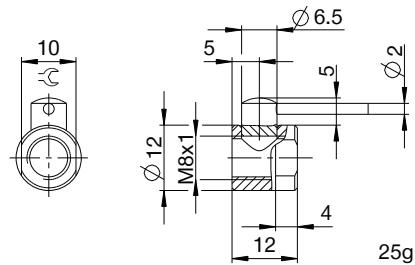
### ACCESSORIES

Pos.	Order no.	Accessories	Remarks
①	<b>PAH08X10-A</b>	Stop sleeve	Including 1x PVM08X10-A
②	<b>PSH08X10-A</b>	Sensor stop sleeve	Query only possible via damper with steel or plastic head (except for bellows). Inductive sensor, PNP closer (NO), PUR cable 2 m, degree of protection IP65. For further information see separate data sheet.
③	<b>PBV08X10NA-A</b>	Side load adapter standard stroke Protection: wiper (NBR)	Impact angle max. 30°. Can only be used in combination with industrial shock absorbers without head. Locknut PVM12X10-A suitable for external thread of the side load adapter.
④	<b>PBV08X10NF-A</b>	Side load adapter standard stroke Protection: felt ring (felt)	Impact angle max. 30°. Can only be used in combination with industrial shock absorbers without head. Locknut PVM12X10-A suitable for external thread of the side load adapter.
⑤	<b>PKS08X10-A</b>	Clamping flange orthogonal screwed	Tightening torque of the screws max. 2.5 Nm.
⑥	<b>PKP08X10-A</b>	Clamping flange screwed in parallel	Tightening torque of the screws max. 2.5 Nm.
⑦	<b>PVM08X10-A</b>	Stainless steel locknut	Included with the industrial shock absorber.
⑧	<b>PDD08X10-A</b>	Pressure chamber seal	Recommended fixation with PVM08X10-A. Seal must be in full contact on both sides.

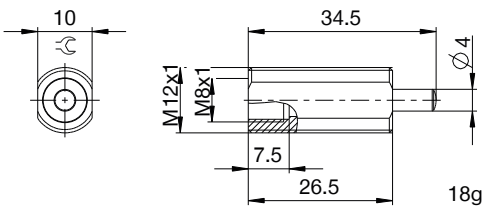
①



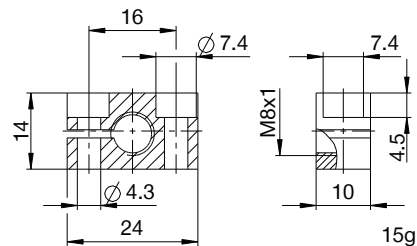
②



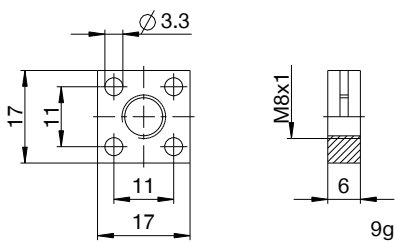
③ ④



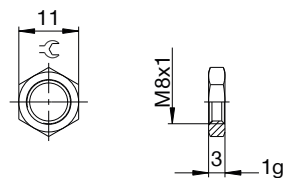
⑤



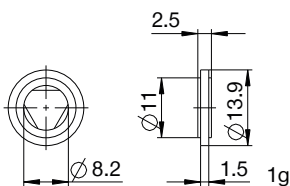
⑥



⑦



⑧



## ▶ CLASSIFICATION

**P SE 08X10 N W A K -A**

### Design

**P** Industrial shock absorbers PowerStop

### Series

**ME** Mini Energy

**SE** Standard Energy

**HE** High Energy

**AE** Adjustable Energy

### Thread

**08** Thread nominal diameter

**X**

**10** Thread pitch (factor 10)

### Stroke variant

**N** Standard stroke

**L** Long stroke

**V** Extra long stroke

### Hardness degree

**H** Hard (0.1 - 1.2 m/s; Adjustable Energy: 0.1 - 5 m/s)

**M** Medium (0.8 - 2.2 m/s)

**S** Soft (1.8 - 3.5 m/s)

**W** Supersoft (3 - 5 m/s)

### Protection

**D** no protection

**F** Felt ring

**A** Wiper (NBR)

**B** Bellow (TPE)

### Head

**D** no head

**S** with steel head

**K** with plastic head

### Version

**-A** Versioning from a to z