

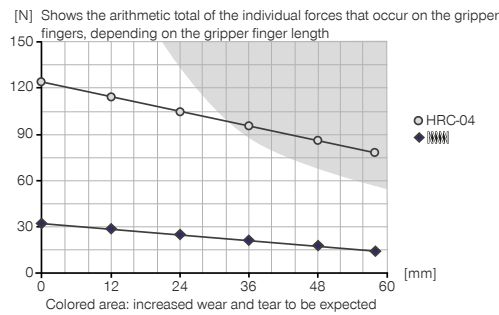
2-JAW PARALLEL GRIPPERS

HRC-04-080644

▶ PRODUCT SPECIFICATIONS



▶ Gripping force diagram



▶ Forces and moments

Displays static forces and moments that can also have an effect, besides the gripping force.



Mr [Nm]	4
Mx [Nm]	14
My [Nm]	5
Fa [N]	330

▶ TECHNICAL DATA

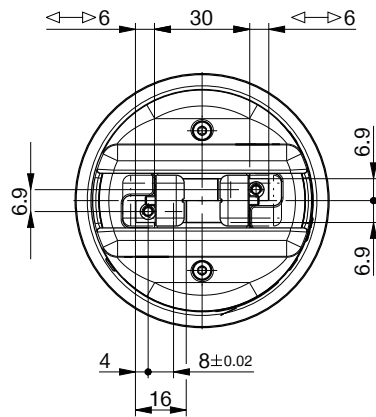
Order no.	HRC-04-080644
Suitable for robot type	Yaskawa HC10 / HC10 DT**
HRC design according to ISO/TS 15066	Yes
HRC form	collaborative
Cable management	internal
Type of drive	pneumatic
Control	IO-Link
Stroke per jaw [mm]	6
Gripping force safety device	Yes
Gripping force in closing [N]	130
Gripping force in accordance with ISO/TS 15066 [N]*	<140
Gripping force secured by spring min. [N]	40
Closing time [s]	0.02
Opening time [s]	0.04
Repetition accuracy +/- [mm]	0.025
Integrated valve technology	Yes
Integrated position sensing	Using process data
Current consumption max. [A]	0.10
Voltage [V]	24
Operating pressure min. [bar]	4
Operating pressure max. [bar]	8
Nominal operating pressure [bar]	6
Operating temperature min. [°C]	+5
Operating temperature max. [°C]	+50
Air volume per cycle [cm³]	5.4
Protection to IEC 60529	IP40
Weight [kg]	0.96

* Value based on the parameters described in the ISO/TS 15066, determined with a force measuring device certified by the DGUV (German Social Accident Insurance)

** Adapter plates required for HC10: APR000026 + APR000027 / Adapter plate required for HC10 DT: APR000027

For more information, refer to our Yaskawa brochure.

▶ TECHNICAL DRAWINGS



- ① Gripper attachment
- ② Energy supply
- ③ Fixing for gripper finger
- ⑤③ Fixing for gripper finger
- ⑤④ Robot mount
- ⑤⑥ Other/auxiliary energy supply

